

Application:

The SAN convector radiators KO are designed for heating of church interior, to be mounted below the benches. The construction fulfils the government circular from the Church Ministry concerning implementing and use of church heating systems.

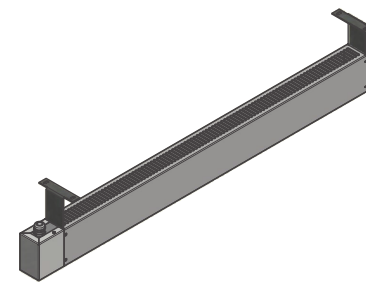
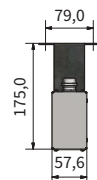
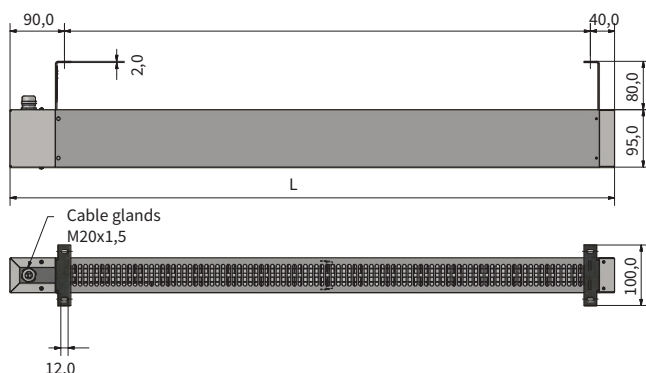
The radiator is manufactured from powder painted steel plate, with limiter. Silent operation.

Power:	Approx. 400W/m
Voltage:	230V
Max length:	2400mm
Colour:	light grey RAL 7032
Protection class:	IP3X
Approval:	EN-60335-2
Insulation class:	Double insulation

Other length, power and voltage available upon request.
Other colours available against a surcharge.

Convector Radiator Type KO

Part no.	Length, mm	Power, W	Voltage, V	Surface load
826600800	800	320	230	0,25W/cm ²
826600900	900	360	230	0,25W/cm ²
826601000	1000	400	230	0,25W/cm ²
826601100	1100	440	230	0,25W/cm ²
826601200	1200	480	230	0,25W/cm ²
826601300	1300	520	230	0,25W/cm ²
826601400	1400	560	230	0,25W/cm ²
826601500	1500	600	230	0,25W/cm ²
826601600	1600	640	230	0,25W/cm ²
826601700	1700	680	230	0,25W/cm ²
826601800	1800	720	230	0,22W/cm ²
826601900	1900	760	230	0,22W/cm ²
826602000	2000	800	230	0,22W/cm ²
826602100	2100	840	230	0,22W/cm ²
826602200	2200	880	230	0,22W/cm ²
826602300	2300	920	230	0,22W/cm ²
826602400	2400	960	230	0,22W/cm ²



April 2019 -01261-SD-EN