



SAN-EX-RFT Adjustable Air Warmers

Construction

The RFT of air warmers is designed for use in small work or storage areas which are located in Zone 1 and 2 or Zone 21 and 22 Hazardous Areas where the flammable atmosphere is a IIA, IIB or IIC Gas Group.

Features

- Certified to meet the ATEX Directive 94/9/EC and IECEx
- Fabricated steel enclosure weatherproof to IP66
- Suitable for 110V or 230/254V supplies
- Temperature classes T2, T3 and T4 available
- Suitable for floor or wall mounting
- 2 x 20mm (plugged) cable entries provided as standard
- Corrosion resistant powder coated finish
- Suitable for ambient temperatures from -60°C to +60°C (subject to conditions to be discussed with sales engineer)
- Individually replaceable heating elements

Typical Applications

- Aircraft hanger service bays
- Fuel servicing areas
- Chemical plants
- Offshore installations
- Battery stores
- Gas installations
- Containers
- Crane cabs
- Paint/solvent stores

Rating

500W to 2kW

Certification

ATEX certified II 2 G/D
IECEx & ATEX certified Ex'd' IIC T2 to T4
Ex tD A21 IP66 T300°C to T135°C
EN/IEC60079-0, EN/IEC60079-1, EN/IEC61241-0 & EN/IEC61241-1

Enclosure

Mild steel powder coated orange/grey, stainless steel option available to special order

Controls

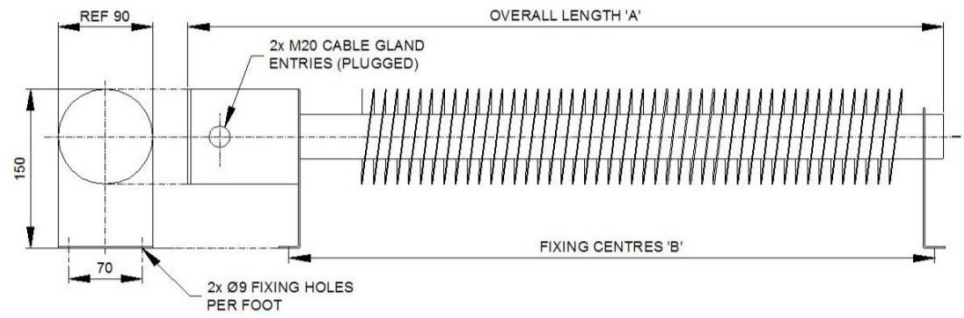
If required the heaters can be controlled from the SAN range of remote mounted thermostats available for use in Safe or Hazardous Areas

Mounting

Pre-drilled support feet supplied as standard

Voltage

1 phase 230/254V or 110V



SAN-EX-RFT Adjustable Air Warmers

Model	"T" Class	Rating Watts	Dimensions		Weight (kg)
			A	B	
RFT-500-T3	T3	500	800	670	9
RFT-1000-T3	T3	1000	1300	1170	12
RFT-1500-T3	T3	1500	1900	1770	17
RFT-2000-T3	T3	2000	2450	2320	20
RFT-500-T4	T4	500	1300	1170	12
RFT-750-T4	T4	750	1900	1770	17
RFT-1000-T4	T4	1000	2450	2320	20