

Flexible Tubular Heater

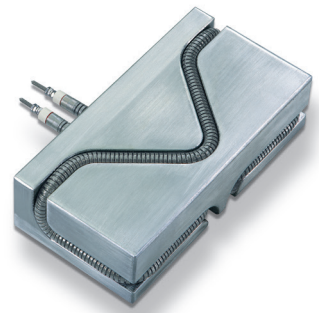
Flexible Tubular Heaters

The flexible tubular heaters are the first tubular heater which can be manually bent in all three dimensions. Easiest handling, simple assembly, optimal thermal features and the simple storage (supplied in straight condition with numerous lengths from stock) are outstanding product arguments.

Towards the traditional heating (e. g. cartridge heaters type HHP) the three dimensional bending makes high flexibility possible for engineers.

With applications such as outline heating a better heat transition, considerable savings of the tool mass, replacements as well as lower energy consumption can be achieved.

And thus also in round (Ø 6,5 mm and 8,5 mm) as well as in square shape (6 x 6 mm and 8 x 8 mm).



- Easy installation with a uniform finish
- Can be formed by hand
- Stored in a straight condition to save storage space
- No special installation tools required
- Patented technology ensures industry leading heat transfer
- Up to 75% sheath contact with round and square hotflex heaters when recommended groove geometry is followed
- Rapid heat-up times
- Minimal temperature difference between heater sheath and heated tool
- 3-dimensional groove geometry possible
- Industry's smallest bending radius
- Hotflex's flexibility enables heat to be located where it is needed; an improvement over rigid cartridge heaters
- Reduced energy costs: tool mass can be reduced



Technical Data:

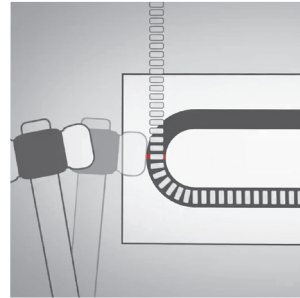
Sheath material stainless steel
 Sheath temperature
 of heating elementmax. 700 °C / 1290 °F
 Standard connection voltage 230 V
 High voltage resistance* 1000 V AC
 Insulation resistance* ≥5 MOhm at 500 V DC
 Leakage current* < 0.5 mA at 253 V AC
 Wattage tolerance ± 10 %
 Length tolerance ± 1.5 %
 *tested at environmental temperature

Options:

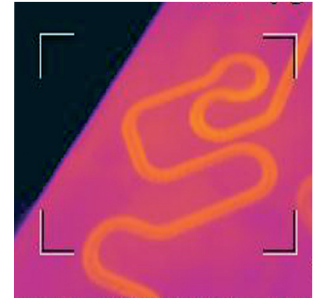
- Bendable unheated zones
- Connection voltage from 12 V to 250 V
- Individual length
- Individual wattage
- Individual connection options

Recommended groove geometry

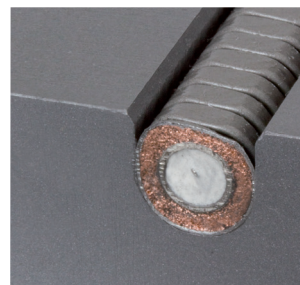
Type	Groove dimensions (mm) w x h
6.0 ^{±0.1}	6.1 ^{±0.1} x 7.1 ^{±0.1}
Ø6.5 ^{±0.1}	6.0 ^{±0.1} x 6.5 ^{±0.1}
Ø8.0 ^{±0.1}	7.7 ^{±0.05} x 8.0 ^{±0.1}
8.0 ^{±0.1}	8.1 ^{±0.1} x 9.1 ^{±0.1}
Ø8.2 ^{±0.1}	7.9 ^{±0.05} x 8.2 ^{±0.1}
Ø8.5 ^{±0.1}	8.2 ^{±0.05} x 8.5 ^{±0.1}
Ø10.0 ^{±0.1}	9.7 ^{±0.05} x 10.0 ^{±0.1}



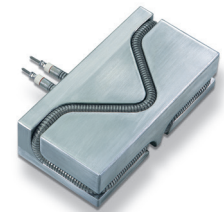
installation without special tools



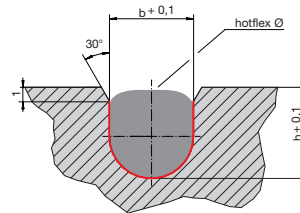
ideal heat transfer



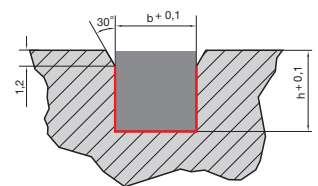
installed, round groove geometry



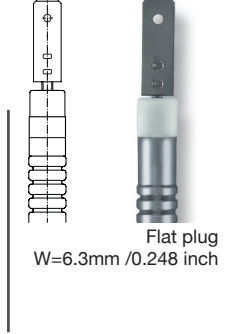
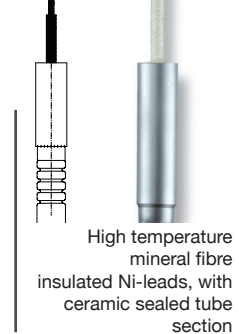
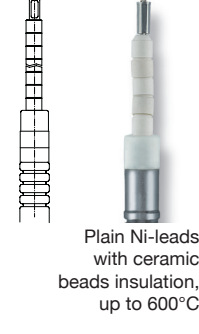
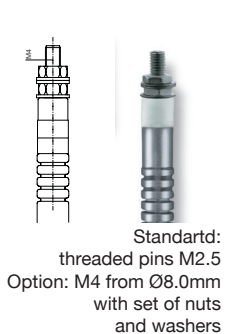
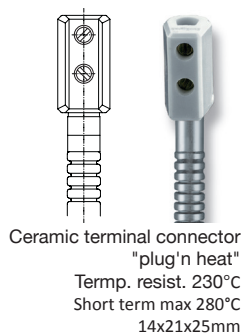
installation example



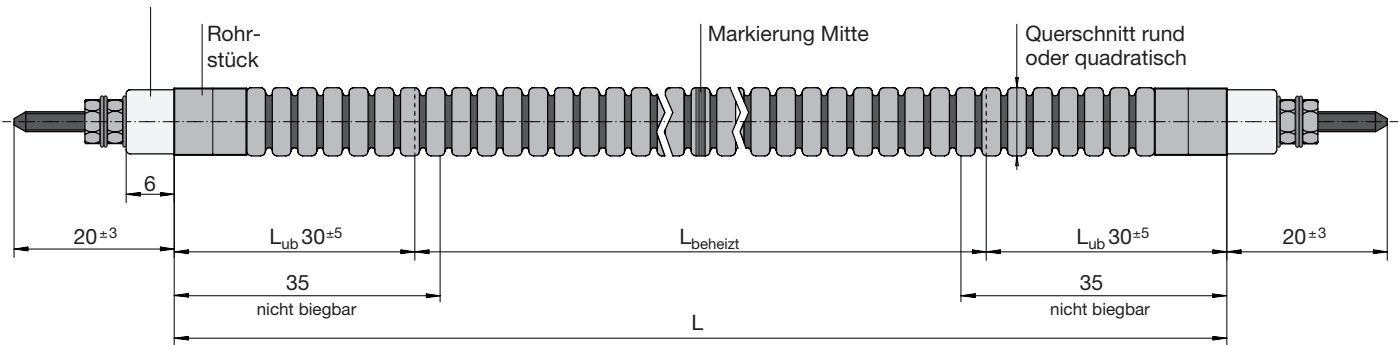
Round groove geometry



Square groove geometry



Flexible Tubular Heater



Dimensions:

Depending on the number of bends the flexible tubular heater can increase up to 1%.

Type	L min (mm)	L max (mm)	Tube section max (mm)	Min. bending radius internal	Max. sheath surface load (W/cm ²)	Max. watage (W) at 230V
6.0	300	1.800	24	6.5	10	2190
Ø6.5	300	1.800	24	6.5	10	2190
Ø8.0	300	2.600	10	10	15	5200
8.0	300	2.600	10	10	15	5200
Ø8.2	300	2.600	10	10	15	5200
Ø8.5	300	2.600	10	10	15	5200
Ø10.0	300	2.600	10	10	12.5	5200

Range Ø6.5mm (230V)

Part no	L (mm)	P (W)
	300	350
	350	400
	400	500
	450	600
	500	650
	550	700
	600	800
	650	850
	700	900
	750	1000
	800	1100
	850	1200
	900	1300
	950	1350
	1000	1400
	1050	1450
	1100	1500
	1150	1550
	1200	1600
	1250	1650
	1300	1700
	1350	1800
	1400	1900
	1450	2000
	1500	2100

Range Ø8.0mm (230V)

Part no	L (mm)	P (W)
	400	795
	450	910
	500	1025
	550	1145
	600	1260
	650	1380
	700	1495
	750	1615
	800	1730
	850	1845
	900	1960
	950	2080
	1000	2195
	1050	2316
	1100	2430
	1150	2545
	1200	2665
	1250	2780
	1300	2895
	1350	3015
	1400	3130
	1450	3245
	1500	3365
	1550	3480
	1600	3600

Range Ø8.5mm (230V)

Part no	L (mm)	P (W)
	300	650
	350	750
	400	900
	450	1050
844800	500	1150
844802	550	1300
844804	600	1450
844806	650	1600
844808	700	1750
844810	750	1900
844812	800	2050
844814	850	2200
844816	900	2350
844818	950	2500
844820	1000	2650
844822	1050	2800
844824	1100	2930
844826	1150	3060
844828	1200	3190
844830	1250	3320
844832	1300	3450
844834	1350	3580
844836	1400	3710
844838	1450	3840
844840	1500	3970

Range Ø8.5mm (230V)

Part no	L (mm)	P (W)
	500	700
	550	780
	600	860
	650	950
	700	1000
	750	1100
	800	1190
	850	1250
	900	1350
	950	1430
	1000	1500
	1050	1590
	1100	1650
	1150	1750
	1200	1830
	1250	1900
	1300	1990
	1350	2070
	1400	2150
	1450	2230
	1500	2300