

Thermostat w/temperature limiter Type EGO

Application:

The EGO thermostat is equipped with 2 capillary tubes, one for the temperature range and one for the limiter temperature. Both are lead into the same thermo well. When the limiter temperature has been reached, the thermostat must be manually reset.

Type EGO 3 x 16A - 400V

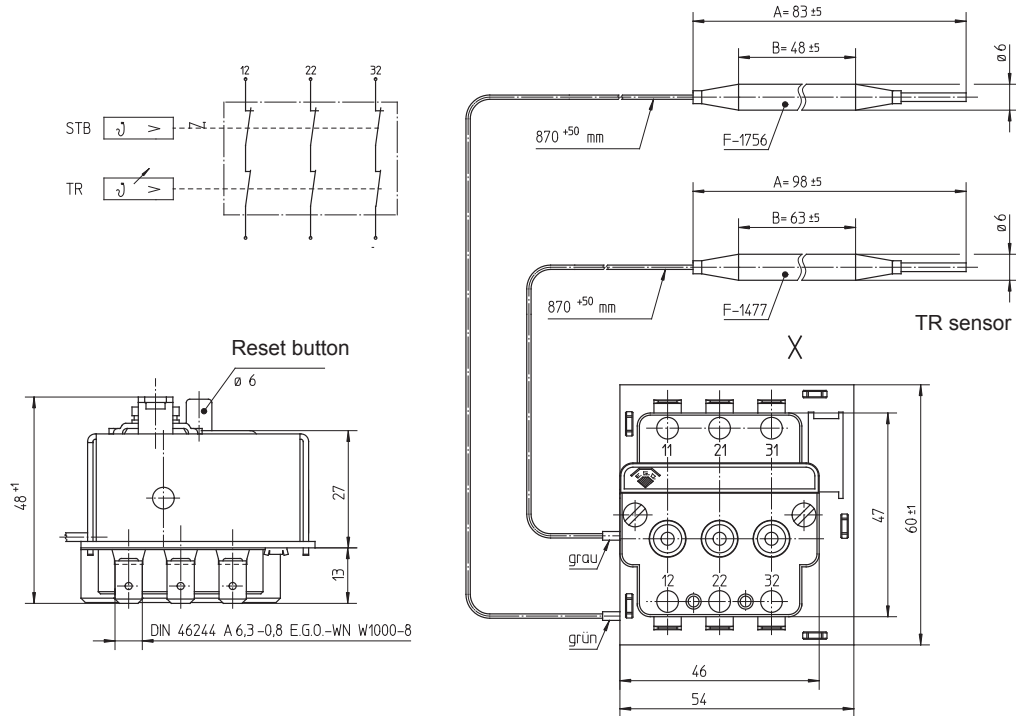
Temperature range	Limiting temperature	Sensor I/II	Setting	Part no.
5-80°C	99°C	6° x 181	slot	319201
30-85°C	110°C	8.5° x 221	shaft	319221
30-85°C	button for 319221 318955			

Remarks	TR	STB
Normal climate DIN EN 60068-1 (23±2)°C		
Temperature are ___ values		
Connection difference	(12±6)K	
Min sensor temp.	-20°C	-20°C
Max sensor temp.	120°C	130°C
Max housing temp.	80°C	
Min bending radius, capillary tube	5mm	
Correction factor	0,23	0,32 (K/K)

Remarks	TR	STB
Normal climate IEC68-1 (23±2)°C		
Temperature are off values		
Connection difference	(12±6)K	
Min sensor temp.	-20°C	-20°C
Max sensor temp.	130°C	220°C
Max housing temp.	80°C	
Min bending radius, capillary tube	5mm	
Correction factor	0,19	0,30 (K/K)

Electro Heat

Type 319201



Type 319221

