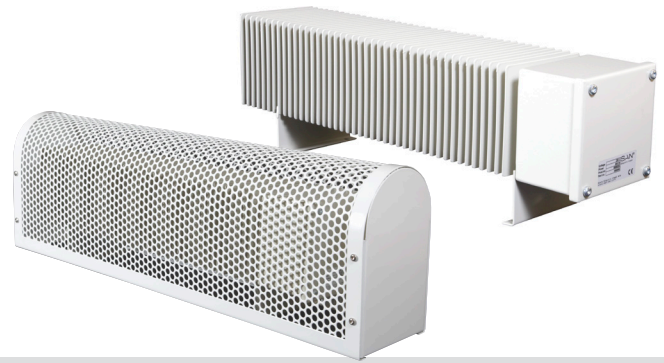


### SAN Finned Tubular Radiator



#### Application:

The SAN finned tubular radiator type A is an industrial radiator for heating of rooms - garages - cabinets etc., with great demands for a robust construction. Delivered in grey painted steel.

Finned tubular radiator type A is delivered as standard, see below scheme. Upon request the A can also be delivered with other voltage, power and length.

Please note! In case of other lengths than below stated, the power and length will be adjusted so that the surface temperature remains 120°C.

SPECIAL VERSION: vibration- and shock safe, e.g. for use on ships.

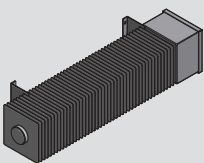
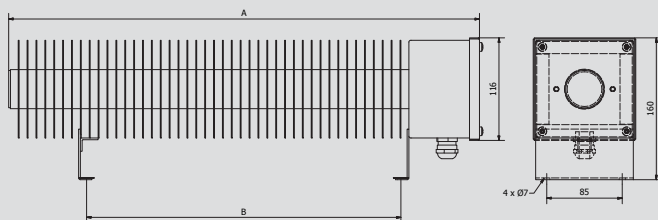
Protection class: IP55.

Standard colour: RAL 7032 grey. Other colours upon request.

Surface temperature: 120°C at 22°C ambient temperature.

Placing: The radiator must be placed with a minimum distance of 50mm to combustible materials. The top of the radiator must not be covered, but should be situated in free space to ensure free air circulation.

Type	Power W	Voltage V	A mm	B mm	Part no.
A 5	500	230	530	350	832001
A10	1000	230	930	750	832011
A15	1500	230	1330	1150	832021
A20	2000	230	1730	1550	832031
A 5	500	400	530	350	832051
A10	1000	400	930	750	832061
A15	1500	400	1330	1150	832071
A20	2000	400	1730	1550	832081



#### Grating

Protection grate for A 5, L=650mm	83245
Protection grate for A10, L=1050mm	83246
Protection grate for A15, L=1450mm	83247
Protection grate for A20, L=1850mm	83248

Height: 200mm. Width: 135mm

Standard colour: RAL 9016 white. Other colours upon request.



### SAN Finned Tubular Elements

**Application:**

The SAN finned tubular elements type AL are especially developed to avoid condensation in automatic cabinets - terminal boxes, cold falling down from large window areas etc.

**Material:**

Finned tube:                   Stainless steel SIS 2350, Ø42mm  
 Connection:                   Plastic with PG 11 gland, IP 54  
 Surface temp.:                150°C at 22°C ambient temperature  
 Dimensions:                   A: Total length, B: Heating zone

**Ribbed Tube Element, AL**

Type	Power W	Voltage V	A mm	B mm	Part no.
AL 0.5	60	230	230	120	83117
AL 1	115	230	350	245	83103
AL 1,5	165	230	470	375	83104
AL 2	200	230	575	495	83105
AL 4	400	230	1000	905	83126
AL 6	600	230	1500	1405	83127

Suggestions for thermostat: type KTO miniature.