

- Energy saving LED technology
- Wide voltage range
- Integrated power unit
- Magnet, screw or clip mount
- Wide variety of connections
- On/off switch or motion sensor

The LED 025 light series is suitable for all types of panels and enclosures, especially where space is at a premium. These lights have a very long service life due to the use of LED technology. They are available with powerful non-slip rubberized magnets allowing them to be easily positioned in any steel enclosure. Screw mounting is also available as an option. The power output allows up to 10 lights to be connected to each other (daisy chain) with both the input and output plugs snap-locking into place.

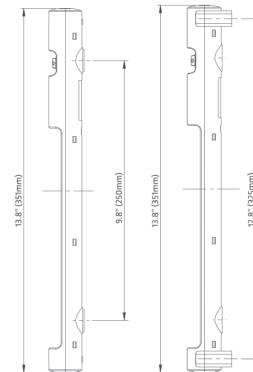


Technical Data:

Power consumption	max. 5W (~ 75W incandescent bulb)
Luminosity	400 Lm at 120°C (1,200 Lm at 360°C or equivalent 95W light bulb)
Lamp type	LEC, 120° angle of radiation, light color - daylight, color temp - 6,000K to 7,000K
Service life	60,000 hrs at 20°C
Connection	2-pole plug with snap lock; AC: max 2.5A / AC 240V, white connector; DC: max 2.5A / DC 60V, blue connector
Mounting	Magnet, M5 screw (not included), or clip (M6 screws) torque 2 Nm max.
Casing	Plastic, transparent
Dimension	see drawing
Op/storage temp.	-30 to +60°C / -40 to +85°C
Op/storage humidity	max. 90%RH (non-condensing)
Prot. type/prot. class	IP20 / II (double insulated)
Approvals	UL File No. E234324, VDE, EAC
Accessories	input and output connector, cable for supply or daisy chain

On/off switch
light w/
magnet or
screw mount

On/off switch
light w/
clip mount



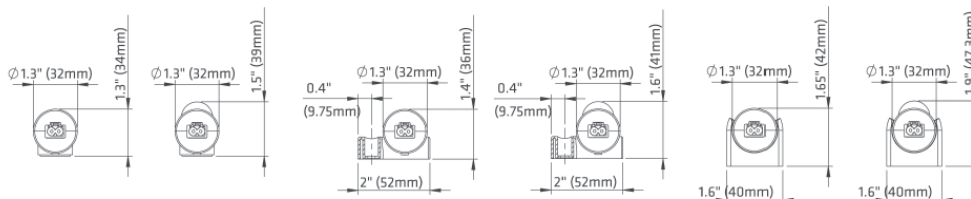
Mounting options: The lights are available with magnet mount for easy positioning in any steel cabinet or enclosure. Other options are the LED 025 with screw mount, and specifically designed clip holders for clip mount of the LED025 can also be positioned anywhere in the cabinet. The clip holders are screwed to the cabinet wall, the lamp is simply snapped into the clip holders and can be rotated as needed for a perfect illumination.

Note: The lights are not approved for household lighting.

Magnet mount end view

Screw mount end view

Clip mount end view



Light kits with input connector included

Art. No.	Operating voltage	Switch type	Weight
	AC 100-240V, 50/60Hz (min AC 90V, max. AC 265V)	on/off switch	135g
	DC 24-48V (min DC 20V, max DC 60V)	on/off switch	135g
	AC 100-240V, 50/60Hz (min AC 90V, max AC 265V)	PIR motion sensor ¹	140g
	DC 24-48V (min DC 20V, max DC 60V)	PIR motion sensor ¹	140g

¹Passive infrared (PIR) motion sensor is factory pre-set to turn the light off 5 minutes after all motion ceases.

Light only

Art. No.	Operating voltage	Switch type	Weight
	AC 100-240V, 50/60Hz (min AC 90V, max. AC 265V)	on/off switch	135g
	DC 24-48V (min DC 20V, max DC 60V)	on/off switch	135g
	AC 100-240V, 50/60Hz (min AC 90V, max AC 265V)	PIR motion sensor ¹	140g
	DC 24-48V (min DC 20V, max DC 60V)	PIR motion sensor ¹	140g

¹Passive infrared (PIR) motion sensor is factory pre-set to turn the light off 5 minutes after all motion ceases.

Accessories

Connection cable with input connector and wire leads



Art. No.	Model	Length	Voltage	Color	Approvals ²
	connection cable 2 x AWG 16 with 2 connectors	2.0m	AC	Connectors: white - cable: white	UL, VDE
	connection cable 2 x AWG 16 with 2 connectors	2.0m	DC	Connectors: blue - cable white	UL, VDE

²Applies only to the individual components (cable and connectors)

Extension cable with 2 connectors for daisy chain (input & output) connection



Art. No.	Model	Length	Voltage	Color	Approvals ²
	extension cable 2 x AWG 16 with 2 connectors	1.0m	AC	Connectors: white - cable: white	UL, VDE
	extension cable 2 x AWG 16 with 2 connectors	1.0m	DC	Connectors: blue - cable white	UL, VDE

²Applies only to the individual components (cable and connectors)

Input / output connectors



Input connector

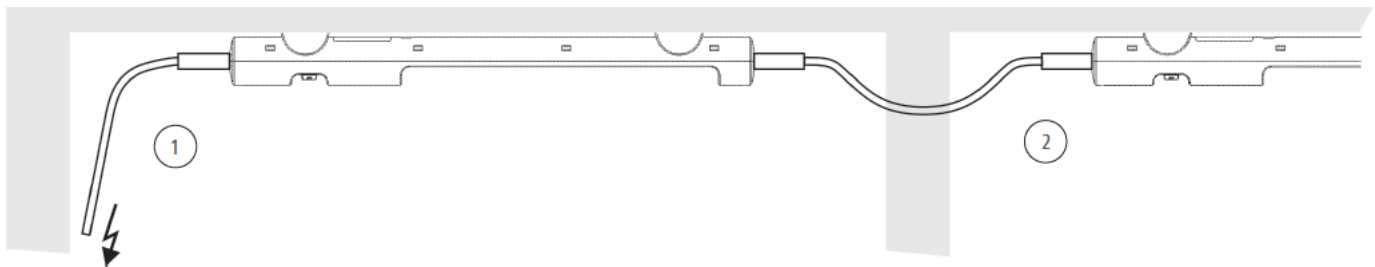


Output connector

Art. No.	Model	Length	Voltage	Color	Approvals ²
	extension cable 2 x AWG 16 with 2 connectors	1.0m	AC	Connectors: white - cable: white	UL, VDE
	extension cable 2 x AWG 16 with 2 connectors	1.0m	DC	Connectors: blue - cable white	UL, VDE

²Applies only to the individual components (cable and connectors)

Connection example



This illustration shows the LED 025 light in a daisy chain application. The lights are easily connected via quick connection plugs - up to 10 lights can be daisy-chained this way. The snap-lock connectors ensure a stable electrical connection even when subjected to vibration. Input / output connectors are also available to assemble cables in non-standard lengths.